



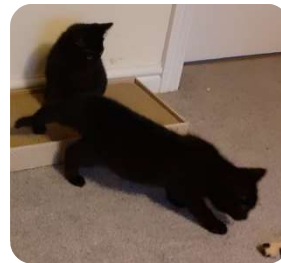
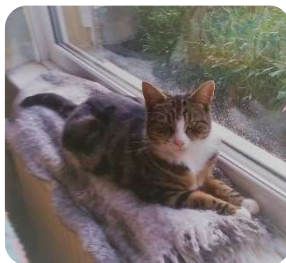
Season's Greetings kind and generous friends and supporters

Thank you to all who support us, no matter how big or small a donation, time given volunteering, fostering, fundraising, sharing social media posts, purchasing our donated goods, supporting events, collecting food, helping with the animals directly through fostering, adoption, dog walking or cat cuddling; it all helps to give the animals a better life. Every contribution helps and we are extremely grateful for all your support and appreciate every kind gesture.

To share your adoption pictures, please email them to animalconcerncumbria@outlook.com

Rehoming – Home to Home

Whilst the building work is ongoing, our animal care team have been working on Home-to-Home rehoming. This is where an animal stays with its current family, undergoes an assessment, is put up for rehoming on social media and matching gets underway. Once potential adopters are identified, meet and greets are undertaken and when a suitable adopter is found, the animal is adopted from the Centre to their new forever home. We are delighted that our recent adoptees have settled well into their new homes and have loved receiving their updates.



Feral/Semi Ferals Rehomed

Ferals are cats who are past the age of socialisation and unsuitable for a home environment, having little or no contact with humans they cannot be tamed, living in outbuildings and sheds. Behaviours are formed during their key socialisation period (from 2-8 weeks old). A female can become pregnant as young as 4 months, so to help reduce the spread of diseases and unwanted litters, Animal Concern Cumbria work in line with the Association of Dogs and Cats Homes Codes of Practice (which we hold full membership) in the Trap-Neuter-Return (TNR) of Ferals. In some instances a Feral may need to be rehomed to an alternative site. If you have barn or land (away from busy main roads) which could house a feral please get in touch.



Mrs Grey rehomed

Fundraising

With the ongoing Covid pandemic affecting fundraising, Government and organisers guidance was taken regarding any events we could participate in.

A small team of volunteers, who have been a huge ongoing support, were delighted when we were able to attend the Workington Christmas Hub and Victorian Fayre in Keswick.

Bonzo was a huge success with dogs and people alike and Blossom, is so laid back and lovely, she expects people to come and make a fuss of her and revels in it when they do.



Blossom



Bonzo

Thank you to everyone who supported us at these events.

Our Thanks to...

Motorcycle Action Group (MAG)

West Cumbria MAG do a Two Tins Ride in support of Age UK and Animal Concern. They travel around West Cumbria collecting donations with their final destination at Whitehaven Harbour for Charity hand over. Our huge thanks to those who support MAG and to the bikers. Your support raised an amazing £75.00 for our Peppa's Pot Campaign.



Year 10 Workington Academy Collection

Form group 10BPE at Workington Academy collected an incredible 244 items of cat and dog food and treats for Animal Concern Cumbria.



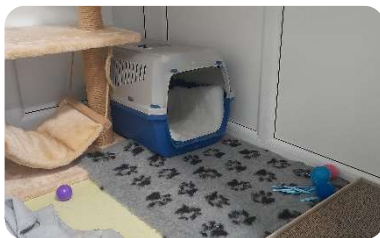
This is the third year the form group has run a collection for us. They chose us because they believe it is so important to help and support animals. They look forward to running future events to support Animal Concern.

Our thanks to the children Form Group and their teacher Bev for their ongoing and amazing support.

Hensingham Helping Heroes

You'll remember the amazing support given by Hensingham Helping Heroes who chose to support us as their YR2 Community Project. The money they raised has gone towards vet bedding for our animals.

Vetbed is used, trusted and recommended by veterinary professionals as it is renowned for its comfort, durability and longevity. It can be easily washed and quickly dried, ensuring a safe, hygienic environment for our animals.



Our Resident Feral

Thanks to a generous donation of straw her shed has been kept cosy and replenished.



Volunteering

Donating

Fostering

Fundraising

Peppa's Pot Campaign

"I cannot thank you enough. Getting help for my dog was the best Christmas present".

Animal Concern have helped animals in a variety of circumstances, from skin conditions, operations, treatments and Trap-Neuter-Return of ferals.

This fund allows us to provide financial assistance in unforeseen circumstances. Working with a number of Vets, Peppa's Pot funding agreements are given.

One of the many examples of your generosity was a Veteran who has lived on the streets with their dog. Years later, their dog needed an operation. The animal isn't "just a dog". It is a companion, support animal and lifeline. Assisting through this Fund means the dog stays with the owner, the animals welfare needs are met and the companionship remains.

THANK YOU FOR YOUR ONGOING SUPPORT



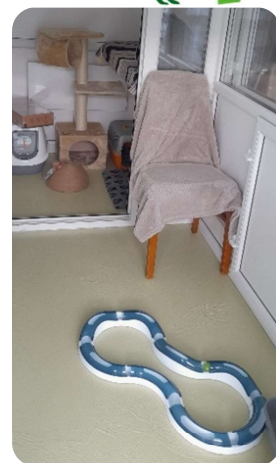
Pets at Home VIP Scheme

Thank you to all who have signed up to Pets @ Home VIP Club.

Signing up to the scheme raises Lifelines for the Charity and saves you money.

Your Lifelines are a huge help to the Charity giving us vouchers to use instore. This years vouchers have gone a long way to kitting out the new catteries with both the basics and enrichment equipment.

If you haven't already, why not join today!



Thanks to A Wilderness Way, Penrith for their kind donation of chairs for our cat pods. These can be used by cats and cat cuddlers alike.

Our First (unplanned) Residents

These two boys literally brought themselves to our doorstep! They got a vet check and were made comfortable and left to settle for a day or two with minimal disturbance only going in to feed them and check on them. After a few days settling in socialisation started.

Onyx a feisty one, unsure of us humans and Loki quieter and more relaxed who quite enjoyed a head scratch. They are now in their new home settling in together.



Ambassadors

Become a Patron

Leave a Legacy



Build Update

Many factors contributed to the timescale of our build. From Covid, getting planning permission, sourcing of materials and weather. It is with joy and excitement as we watch progress being made. Whilst there is still much to do, here is an update so far.

Demolition started



Indoor area ready for roof, windows and internals



Dog kennels refurb



Isolation dog kennels



Cat garden



Utility block



New layout of animal facilities





Financial

Due to Covid restrictions, Animal Concern Cumbria were unable to hold an AGM this year and present the 2020 accounts. Summary of full accounts can be seen on the Charity Commission website.

Have a good time at Christmas & New Year with your animal,
but please be aware of some dangers around the festive season...



Christmas can be a very chaotic and more dangerous time of year for our animals as their homes get taken over with all manner of temptations. Being aware of potential hazards that may be around and taking necessary steps so you can relax and celebrate. Should your animal ingest anything it shouldn't, contact your vets for their advice, remember to take any packaging that may help treat your animal.

- ❖ Chocolate, mince pies, onions, garlic, nuts, sweet & spicy things can cause digestive problems, pain and sometimes be fatal to your furry companion.
- ❖ Plants like Amaryllis, Poinsettias, Holly berries, Mistletoe and Yew are all irritants and potentially toxic to your animals if digested, the most common signs seen include drooling, mouth sores, vomiting and diarrhoea. Even drinking the water from the base of your Christmas tree can cause your animal health problems.
- ❖ Christmas lights and electrical cables that teething puppies and cats like to play with or chew are at risk from burns to the mouth and other signs relating to electrocution that could have fatal consequences.
- ❖ Animals can suffer heart arrhythmias, tremors, seizures and even fatalities, after consuming alcohol. Keep your half empty tins or glasses out of reach as some animals love the taste. Milk or cream-based drinks can be attractive to animals, please be mindful and keep out of reach.

With more people coming and going, noise and general business of the festive season, ensure your animal has a safe, quiet place they can go to where they won't be disturbed. Meeting their needs before settling down to any festivities will ensure they are relaxed and tired from their walk or enrichment activities.

Ways to Support the Charity

- ❖ Peppa's Pot Campaign
- ❖ Unity Lottery – enter at www.unitylottery.co.uk and be in with the chance of winning £25,000!
- ❖ Amazon Smile is the same Amazon products, prices and service. You choose us as your Charity and Amazon will donate a percentage of your spend to us.
- ❖ Shop with Easyfundraising.org.uk and raise donations for our Charity when shopping online.
- ❖ Join Pets at Home VIP Club and get 10% off online and in store too! Enjoy tailored offers, news and tips. Plus, every swipe of your VIP card helps animals in need when you choose us as your nominated Charity.
- ❖ Whether you wish to give a one-off donation or a regular one, PayPal *friends and family* option is a simple, quick and easy way to donate.
- ❖ Scan & donate via our QR codes for either Peppa's Pot or general donations.

SCAN THIS QR CODE



& donate to Peppa's Pot Fund

SCAN THIS QR CODE



to donate to



Thank you to all who give support and keep us going

Wishing you a wonderful, safe Christmas
and look forward to you being around with us in 2022